

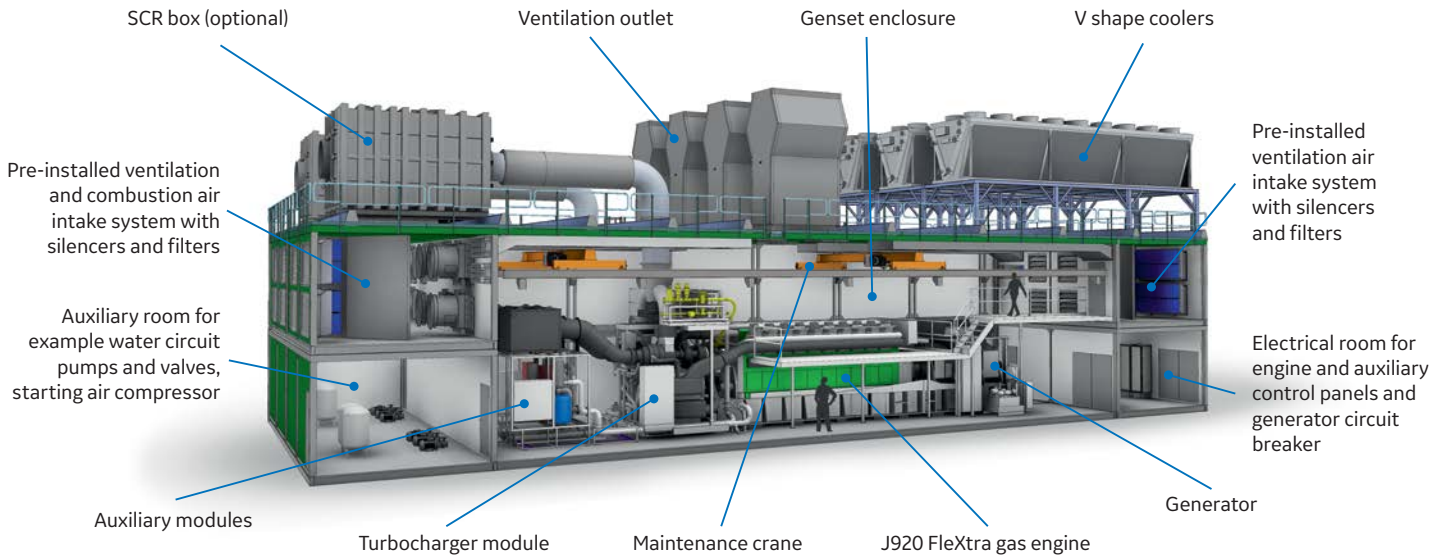


# J920 Flextra PowerPack

fast and scalable  
power modules

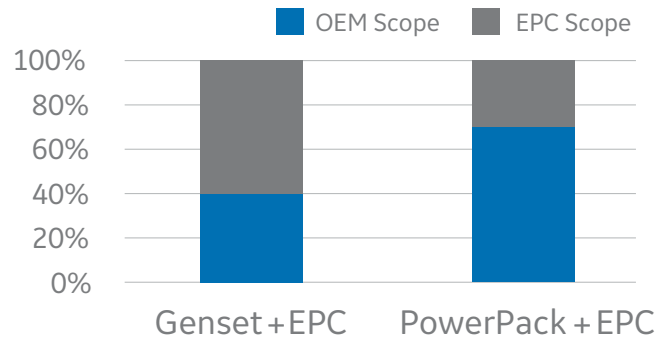


# GE's Jenbacher J920 FleXtra PowerPack



**GE can provide a J920 FleXtra Power Pack as a pre-fabricated, compact and optimized solution that covers the majority of the total plant installed equipment. This includes all critical elements for high performance, high reliability, shortened delivery and installation as well as easier plant maintenance.**

## GE's (OEM) scope responsibility



## Enlarging the J920 FleXtra scope of delivery

The J920 FleXtra PowerPack is a full installation package including all of the core and performance critical balance of plant equipment around the genset that is required for a power plant installation.

The spacious engine room has installed catwalks and cranes for maintenance. On both ends of the engine room the air intake for engine room ventilation and combustion air are installed. The outlet system of the engine room ventilation is installed in the middle, on the roof top. V shape coolers are installed on the roof top of the package to reduce the plant's installed footprint. Also installed on

the rooftop is an SCR box for NO<sub>x</sub> after treatment if required. The auxiliary room contains PowerPack auxiliaries and the electrical room contains engine and auxiliary control panels and the generator circuit breaker.

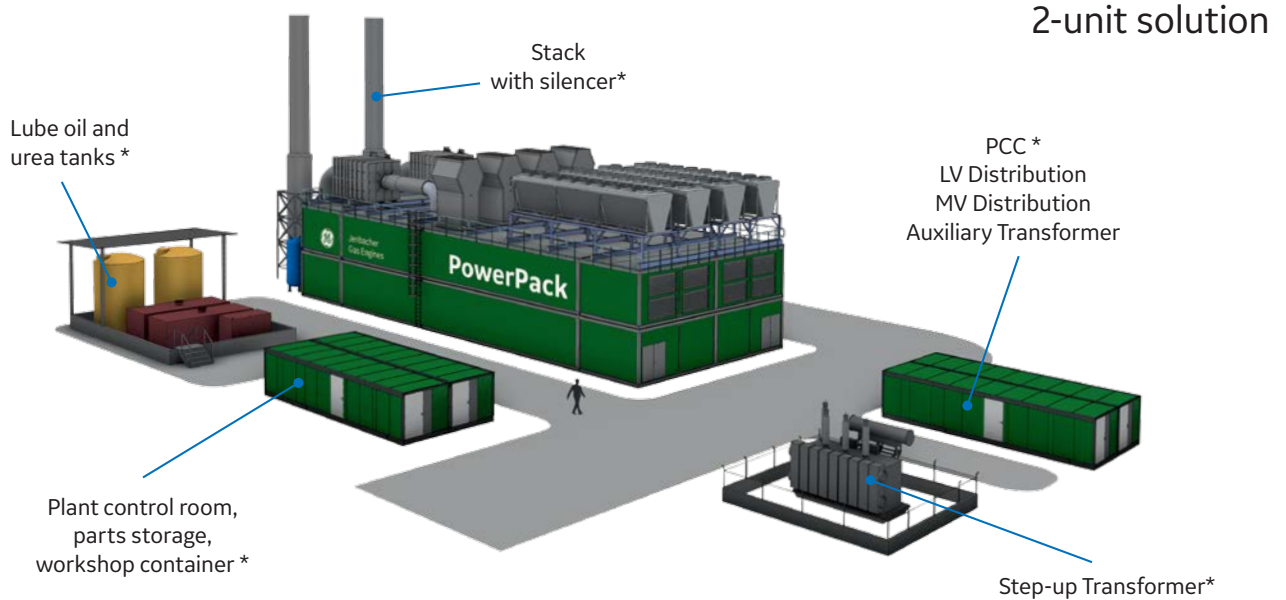
## Modular design for high reliability

The PowerPack is designed for modular installations, it is a pre-engineered and validated solution for fast delivery and shortens installation time at site. An ideal solution for power plants in the range of 10 to 50 MW, it provides clear defined and standardized interfaces to the rest of the plant.

## Why choose the J920 FleXtra PowerPack?

- Modular and compact design for small footprint and later expansion
- Pre-engineered solution to ensure high reliability and serviceability
- Includes all key plant components for performance guarantee with low parasitic loads
- Optimized for fast delivery and short installation time
- Control panels and auxiliary systems in separated rooms

# J920 FleXtra PowerPack plant solution



Ratings per unit	J920 FleXtra 50Hz PowerPack	J920 FleXtra 60Hz PowerPack
Electrical output (gross) kWel	10,380	9,340
Electrical efficiency (gross) %	49.1	49.9
Heat Rate (gross) kJ / kWh	7,332	7,214
Total efficiency with CHP %	90-95	90-95

Output and efficiency at generator terminals, ISO 3046, Nat. Gas MN >80, power factor 1.0, 500 mg/Nm<sup>3</sup> (@ 5% O<sub>2</sub>) NO<sub>x</sub>, efficiency at LHV, all direct driven pumps included.

## Plant responsibilities

While the J920 FleXtra PowerPack itself is a full GE scope installation package, project and site specific designs and balance of plant (BoP) systems must be considered such as:

- Fuel gas reducing or compressor station
- Start air vessel, lube oil tanks, urea tanks, water service tanks
- Exhaust gas stack with silencer
- Exhaust gas heat exchanger or boiler for CHP
- Power control container (PCC) with MV distribution, LV distribution and auxiliary transformer
- Step-up transformer
- All civil works including foundations, interconnect piping and wiring and plant control, parts storage, workshop containers etc.

## Ambient conditions

Standard ambient temperature	-20 to 40 °C	-4 to 10 °F
Option for cold ambients down to	-40 °C	-40 °F
Option for high ambients over	40 °C	104 °F

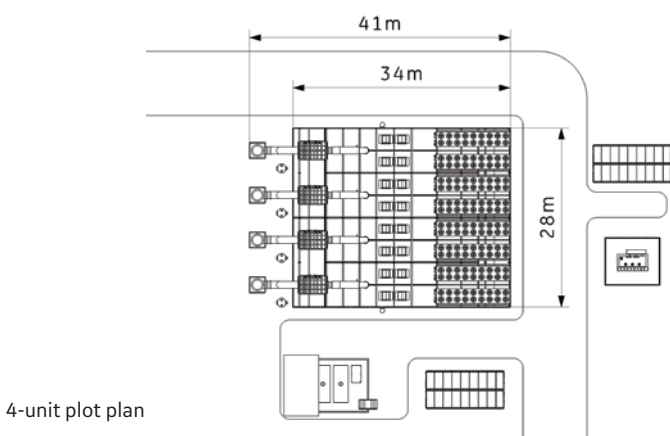
## Sound pressure level

Standard design	85 db(A) in 10 m
Optional design	65 and 75 db(A) in 10 m

(surface and sound pressure level according ISO 3744)

## Main dimensions per unit

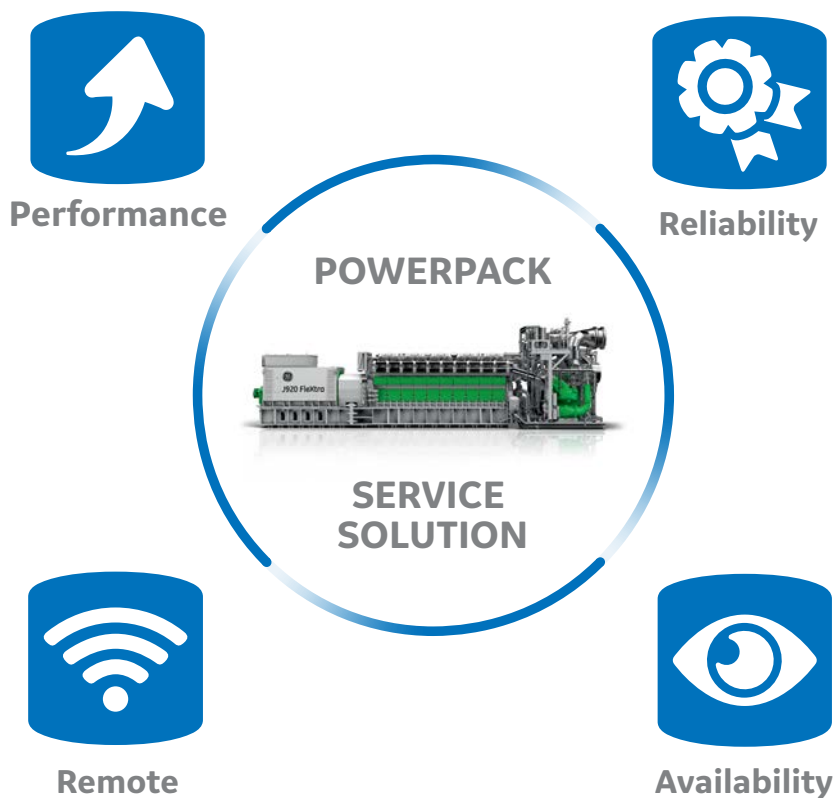
Length	34.0 m	112 ft
Width	7.0 m	23 ft
Height (excl. exhaust stack)	11.8 m	39 ft



4-unit plot plan

\* optional scope by GE or others

# J920 FleXtra PowerPack service



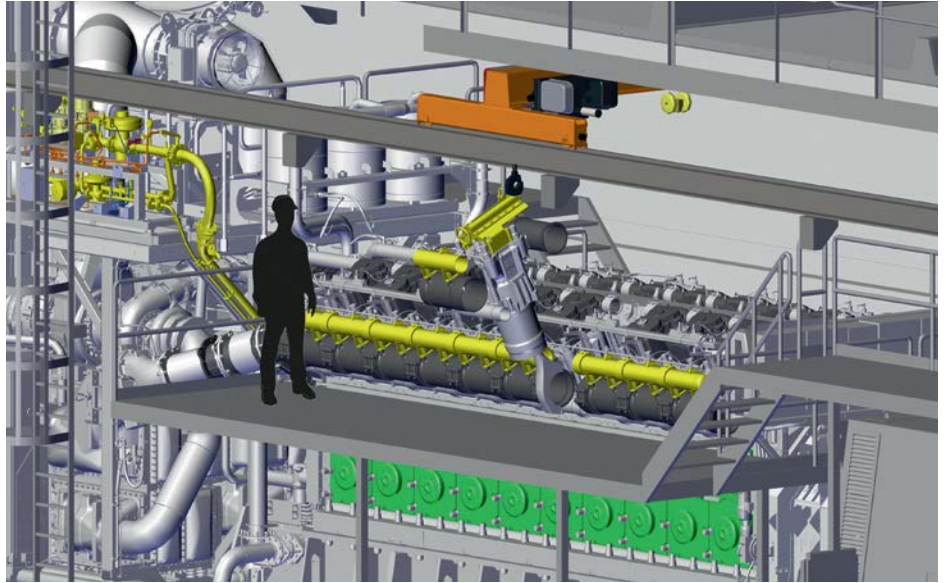
## Flexible Service Solution

The J920 FleXtra PowerPack is a GE solution with special focus on ease of maintenance and high availability for a complete power plant. Depending on the need of the individual customer GE can offer a comprehensive service solution for the entire J920 FleXtra PowerPack. The service solution can cover maintenance of the genset, maintaining the total delivered J920 FleXtra PowerPack, asset performance management or full operation and maintenance (O&M).

# J920 Flextra PowerPack service

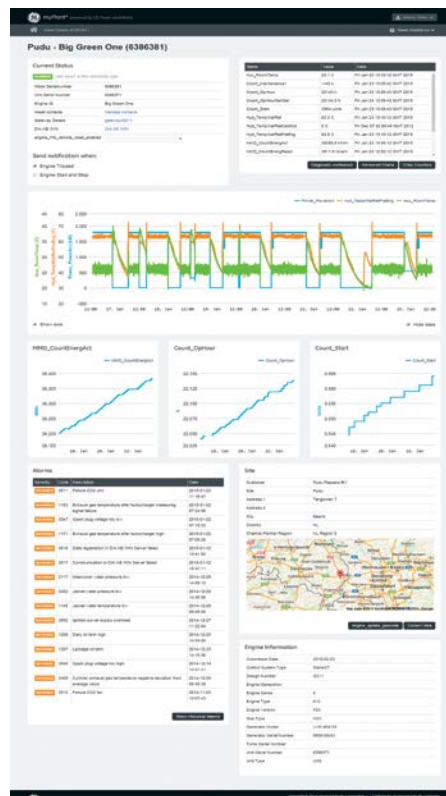
## Serviceability

- The two equipped overhead cranes of the PowerPack enable easy maintenance of the 2-staged turbocharging system, genset auxiliary systems and complete power unit system with less than 4 hours exchange time per cylinder.
- Consumables such as any kind of filter or spark plugs are easy to access from a catwalk in the engine room.
- All key service intervals are aligned between genset and auxiliary systems.



## Asset Performance Management

GE's asset performance management myPlant\* enables condition based maintenance (CBM) of the delivered equipment, and it strongly supports remote operation. By choosing the J920 Flextra PowerPack the entire power plant follows the CBM approach and results in operation and maintenance cost savings for the customer.



\* indicates trademark of the General Electric Company



## [www.gepower.com/distributedpower](http://www.gepower.com/distributedpower)

GE's Distributed Power is a leading provider of engines, power equipment and services focused on power generation and gas compression at or near the point of use. Distributed Power offers a diverse product portfolio that includes highly efficient, fuel-flexible, industrial gas engines generating 100 kW to 10 MW of power for numerous industries globally. In addition, the business provides life cycle support for more than 35,000 gas engines worldwide to help you meet your business challenges and success metrics—anywhere and anytime. Backed by our service providers in more than 150 countries, GE's global service network connects with you locally for rapid response to your service needs.

GE's Distributed Power business is headquartered in Jenbach, Austria.

## More information on GE's Distributed Power technology

### **Austria**

Achenseestraße 1-3  
6200 Jenbach, Austria

### **China**

No.1 Hua Tuo Rd.  
Zhang Jiang Hi-Tech Park  
Shanghai 201203, China

### **Denmark**

Samsøvej 10  
8382 Hinnerup, Denmark

### **Germany**

Carl-Benz-Str. 25  
67227 Frankenthal, Germany

### **Italy**

Via Staffali 1  
37062 Dossobuono, Italy

### **Kenya**

The Courtyard  
General Mathenge  
Drive Westlands  
Nairobi, Kenya

### **Lebanon**

Berytus Park  
Park Avenue, Block B, second floor  
Beirut, Lebanon

### **Mexico**

Antonio Dovali Jaime 70  
Piso 4, Torre B  
Ciudad de Mexico  
CP 01210, Mexico

### **Russia**

Presnenskaya Naberezhnaya 10A  
1233112 Moscow, Russia

### **Singapore**

Level 9, The Metropolis Tower 2  
11 North Buona Vista Drive  
Singapore 138589

### **Spain**

Calle Josefa Valcarcel 26  
Building Merrimack III  
28027 Madrid, Spain

Edif. Meridian, planta 10  
C/ Rosselló i Porcel 21,  
08016 Barcelona, Spain

### **The Netherlands**

Kelvinring 58  
2952 BG Alblasserdam, The Netherlands

### **USA**

Westway Plaza,  
11330 Clay Road  
Houston, TX 77041, USA

1101 West St. Paul Avenue  
Waukesha, WI 53188-4999, USA

## Imagination at work

